



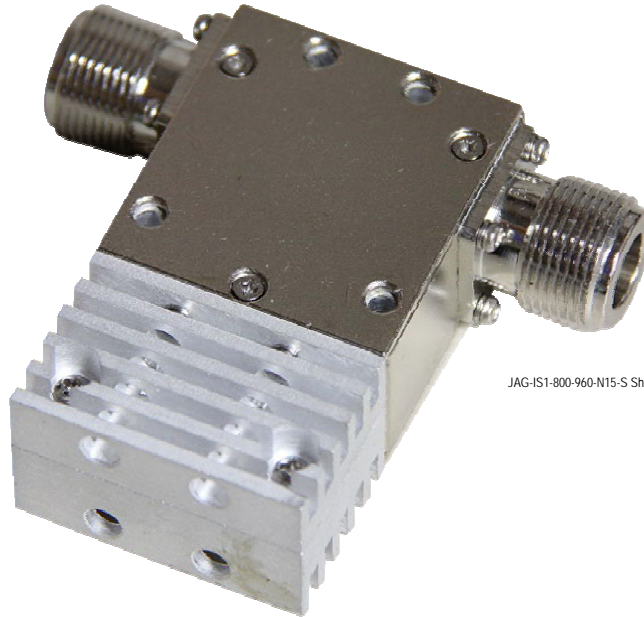
Electromagnetics
"Quality is everything."

ISLI Series
Single Stage Coaxial
Isolator
880-915 MHz

VHF
UHF



JAG-IS1-880-915-S10-X



JAG-IS1-800-960-N15-S Shown with standard load for illustration

* This is a general representation of what the actual product may look like.

JAG coaxial isolators offer excellent performance in a compact rugged package. Quality components ensure good isolation with low insertion loss over their full operating temperature range. These isolators come equipped with a variety of load terminations. JAG ISLI series coaxial isolators offer a broad selection of frequency ranges and bandwidth from 132MHz-18GHz and from 1% to full bandwidth. Applications of these isolators range from military to space to commercial and are available in high power versions with connector options from N type to SMA. Other options available are integral attenuators and custom designs.

Electrical Specifications			Mechanical Specifications			Environmental		
Model	JAG-IS1-880-915-S10-X		Model	JAG-IS1-880-915-S10-X		Model	JAG-IS1-880-915-S10-X	
Frequency Range (MHz)	880-915	*Note 1	Height	inches (mm)	2.36 (60)	Temperature Range	-30-degC to +75-degC	
Bandwidth @ 1.25:1 VSWR or Better (MHz)	35		Width	inches (mm)	1.38 (35)	Notes: 1. Specify model number and exact frequency when ordering 2. Reverse power ratings for isolators are determined by load size with a maximum going up to 100W 3. Replace the X in the model number for optional loads as follows: <ul style="list-style-type: none"> • S = Standard load (default) • 15 = 15W load • 30 = 30W load • 60 = 60W load • 100 = 100W load Example: JAG-IS1-880-915-S10-15 (comes with a 15W load)		
Maximum Input VSWR	1.25:1		Depth	inches (mm)	0.787 (20)			
Maximum FWD Input Power (Watts)	150		Weight	lb (kg)	2 (0.91)			
Maximum REV Input Power (Watts)	100		Mounting Systems	19-inch rack mount				
Maximum Insertion Loss (dB)	0.35			Cavity				
Minimum Isolation (dB)	22	*Note 2		Plate				
Nominal Impedance (Ω)	50		Termination (default)		SMA-f			
Optional Load Sizes (Watts)	15	*Note 3	Termination (optional)		N-f(m)/ SMA-m			
	30	*Note 3	Case Code		IC04			
	60	*Note 3						
	100	*Note 3						

JAG-IS1-880-915-S10-X Product Specification Sheet.

Specifications are subject to change without notice. As a result, all information contained in the present datasheet is subject to confirmation at time of ordering.

Dated: September-17-2014

Issue: 1

Made in Canada

Rev091714.0

Page 1/1



RF EMI Engineering Technology
 26-1750 Creek Way
 Burlington, Ontario
 L7L 7E2 Canada

Email: info@jagelectromagnetics.com
 Web: www.jagelectromagnetics.com
 Tel (905)-635-7437
 Fax (905)-332-8093



Copyright © JAG Electromagnetics

JAG's dedication to continuous Research & Development will result in product improvements as they evolve.